



18 Bowling Green Avenue

Kettering, Northants, NN15 7QJ

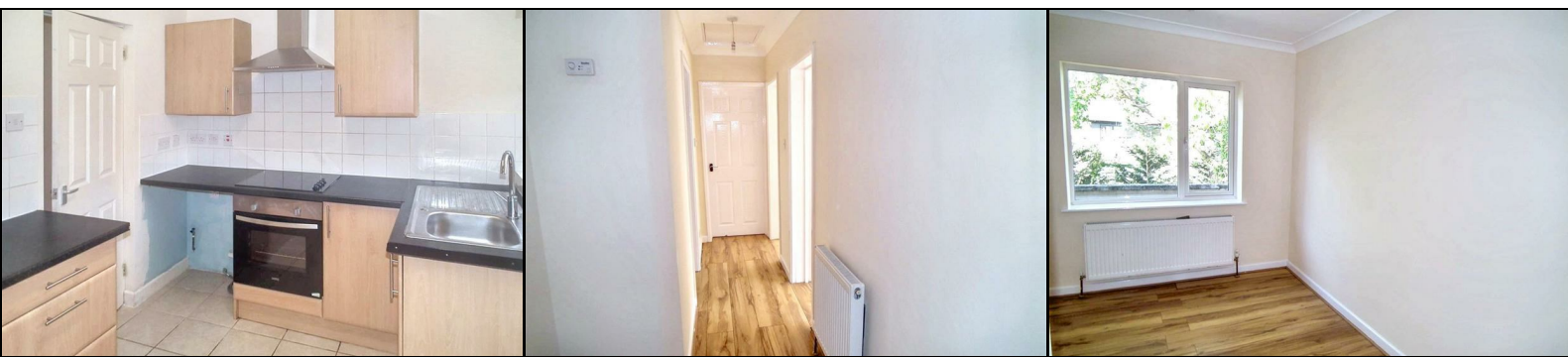
£870 PCM



IF YOU WOULD LIKE TO VIEW THIS PROPERTY PLEASE CLICK THE BUTTON WITH THE EMAIL LOGO AND WE WILL BE IN TOUCH WITH YOU

Available Now

A first floor apartment with two double bedrooms, plus communal rear garden and balcony within walking distance to Kettering Town Centre.



Unfurnished Accommodation: Entrance hall, two double bedrooms, kitchen, living room and bathroom, communal balcony and rear gardens. Energy Rating C. Council Tax Band A. Only one child only permitted. No Pets permitted

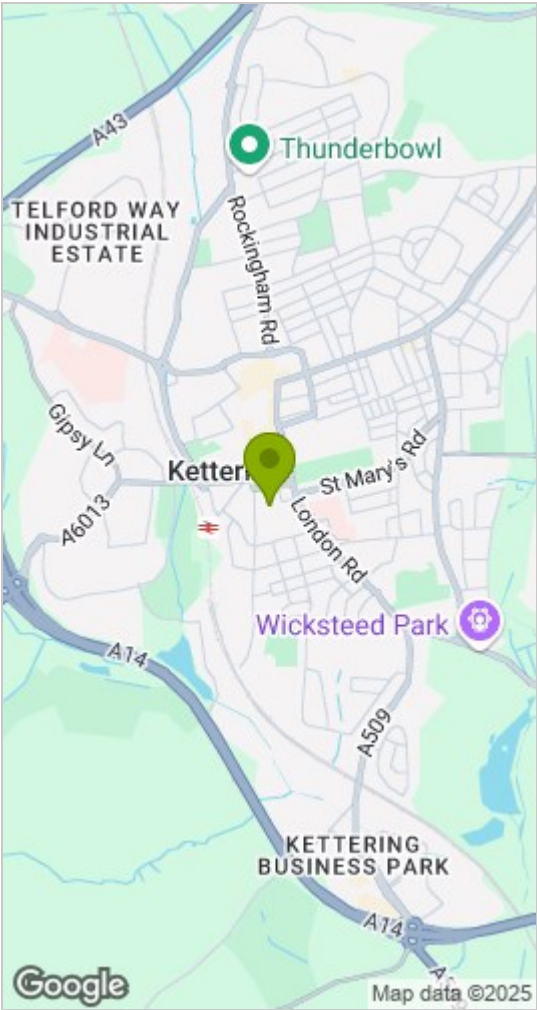
The apartment has a gas combi radiator heating system, UPVC double glazing, wood-effect flooring and neutral decoration throughout. The entrance hall provides access to all rooms. The living room has two windows providing a raised view of the street and allows in plenty of natural light. The kitchen has tiled flooring and a range of base and eye level cupboards and drawers. An electric oven and ceramic hob are provided. A UPVC back door gives access to the communal balcony, where there is an outside store allocated to this flat. The balcony has stairs either end, leading to the communal gardens.

The master bedroom has a window overlooking the front aspect, the second bedroom has a window overlooking the rear communal gardens. The bathroom has a white suite with a shower over the bath, hand wash basin, toilet and a cupboard that houses the boiler.

There are just 8 apartments in this block. The block is situated within walking distance to Kettering Train Station and the Town Centre. Kettering has great links to Corby, Leicester, Birmingham and Cambridge.

- Lounge 13' x 12' (3.96m x 3.66m)
- Kitchen 10' x 7' (3.05m x 2.13m)
- Master Bedroom 13' x 9' (3.96m x 2.74m)
- Bedroom Two 13' x 8' (3.96m x 2.44m)
- Bathroom 9' x 7' (2.74m x 2.13m)

Area Map



Energy Efficiency Rating

| Energy Efficiency Rating | | |
|---|-------------------------|-----------|
| | Current | Potential |
| Very energy efficient - lower running costs | | |
| (92 plus) A | | |
| (81-91) B | | |
| (69-80) C | 76 | 76 |
| (55-68) D | | |
| (39-54) E | | |
| (21-38) F | | |
| (1-20) G | | |
| Not energy efficient - higher running costs | | |
| England & Wales | EU Directive 2002/91/EC | |

These particulars, whilst believed to be accurate are set out as a general outline only for guidance and do not constitute any part of an offer or contract. Intending purchasers should not rely on them as statements of representation of fact, but must satisfy themselves by inspection or otherwise as to their accuracy. No person in this firms employment has the authority to make or give any representation or warranty in respect of the property.